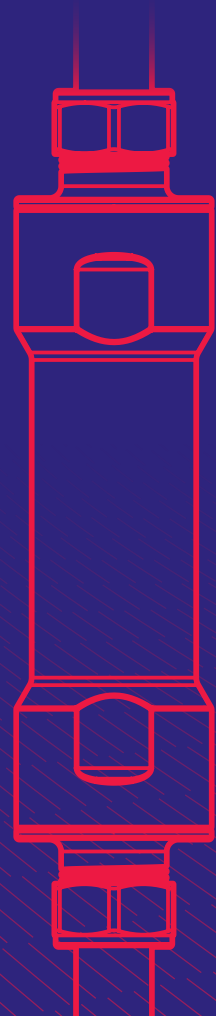




# ElectroScale 2<sup>®</sup>

Scale Reducer -  
15mm and 22mm compression  
Installation and servicing



# ElectroScale2®

## Whole house protection against limescale

*ElectroScale2* has been designed to prevent limescale build-up in homes and small commercial properties.

This product is a non-polluting electrolytic water conditioner. The electrolytic cell alters the crystal structure of the limescale as it passes through making it less likely to stick to pipes or other services.

*ElectroScale2* does not require an electrical power supply.

Installation meets the requirements of Part L of the Building Regulations. This states that provision must be made to treat the feed water to water heaters and hot water circuit of combination boilers to reduce the rate of limescale accumulation.

## Technical Specification

	ElectroScale2: 22mm Compression	ElectroScale2: 15mm Compression
Connection	22mm copper compression to BS EN 1254-2	15mm copper compression to BS EN 1254-2
Material	External copper body, end caps low lead brass, internal zinc anode	
Maximum operating temperature	Cold feed only	
Minimum operating temperature	3°C	
Maximum working pressure	10 bar	
Length (mm)	185	180
Diameter (mm)	39	39
Weight (g)	664g	599g
Pressure drop	36L/min = 44mbar	25L/min = 80mbar
Warranty	10 years	

For the most up to date version of the *ElectroScale2* Installation instructions visit [adey.com](http://adey.com).

## Installation

### IMPORTANT:

**Please read before installation of *ElectroScale2* Scale Reducer.**

*ElectroScale2* can be installed on both horizontal and vertical pipework.

Where possible do not reuse old pipes.

Only WRAS approved jointing compounds should be used.

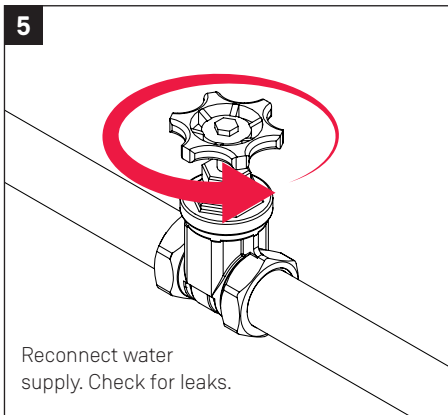
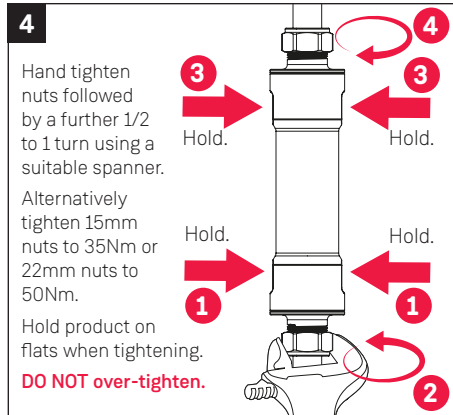
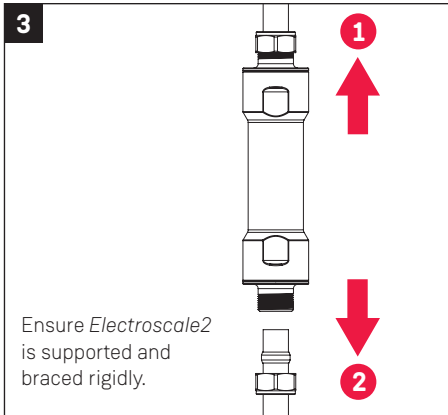
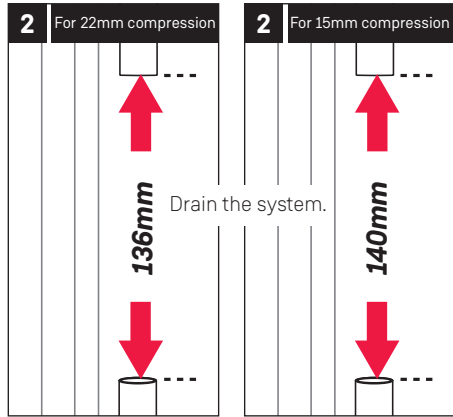
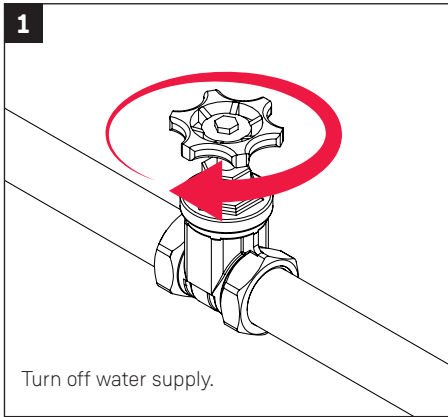
To maintain earth continuity in accordance with current regulations, when required a suitable earth bonding cable should be fitted to the pipework to bypass the product. Refer to latest national or local wiring regulations for more information.

This product must be fitted in accordance with WRAS installation requirements and notes, which can be found on the WRAS website <https://www.wrasapprovals.co.uk/>

It is recommended that a pressure reducing valve is fitted to the incoming water mains to maintain a constant water pressure at all times.

Care should be taken NOT TO solder near product as flux residue and heat may cause damage.

# Installation



ElectroScale2  
22mm Compression



ElectroScale2  
15mm Compression



Clean



MagnaCleanse



MagnaClean



Protect



Test



Maintain

# ADEY®

Telephone UK: +44 (0)1242 546717 or EU: +33 (0)4 50 18 33 33 Email: [info@adey.com](mailto:info@adey.com)

[www.adey.com](http://www.adey.com)

UK: ADEY Innovation Ltd, Unit 2, St. Modwen Park, Stonehouse, GL10 3EZ  
EU: ADEY Innovation SAS, 119 Bis, Rue de Colombes, 92600 Asnières sur Seine, France.



Produced from recycled material  
A carbon neutral company

All ADEY marks are trademarks of Adey Holdings (2008) Limited. Please visit [adey.com/trademarks](http://adey.com/trademarks) for a list of ADEY marks  
Copyright Adey Holdings (2008) Limited © 2021. All rights reserved.

M022160\_LF2-01-05673\_V1